

Tribal Epidemiology Centers Public Health Infrastructure (TECPHI) National Evaluation Report Year 1 Executive Summary

(Performance Year 1: Sept 2022 – Sept 2023)

The 10 Essential Public Health Services and TEC Activities

The Centers for Disease Control and Prevention TECPHI program funds the 12 TECs and one Network Coordinating Center (NCC) to strengthen the public health infrastructure and capacity of the TECs and Tribes, Tribal Organizations, Urban Indian Organizations (T/TO/UIO), and Tribal communities they support. This work will enhance the delivery of the 10 Essential Public Health Services (EPHS) to identify and address underlying social determinants of health, reduce persistent health disparities, and improve the overall health and well-being of American Indian and Alaska Native (AI/AN) populations.

The NCC provides central organization, facilitates collaborative projects and communication, and implements the national cross-site TECPHI Program Evaluation Plan.

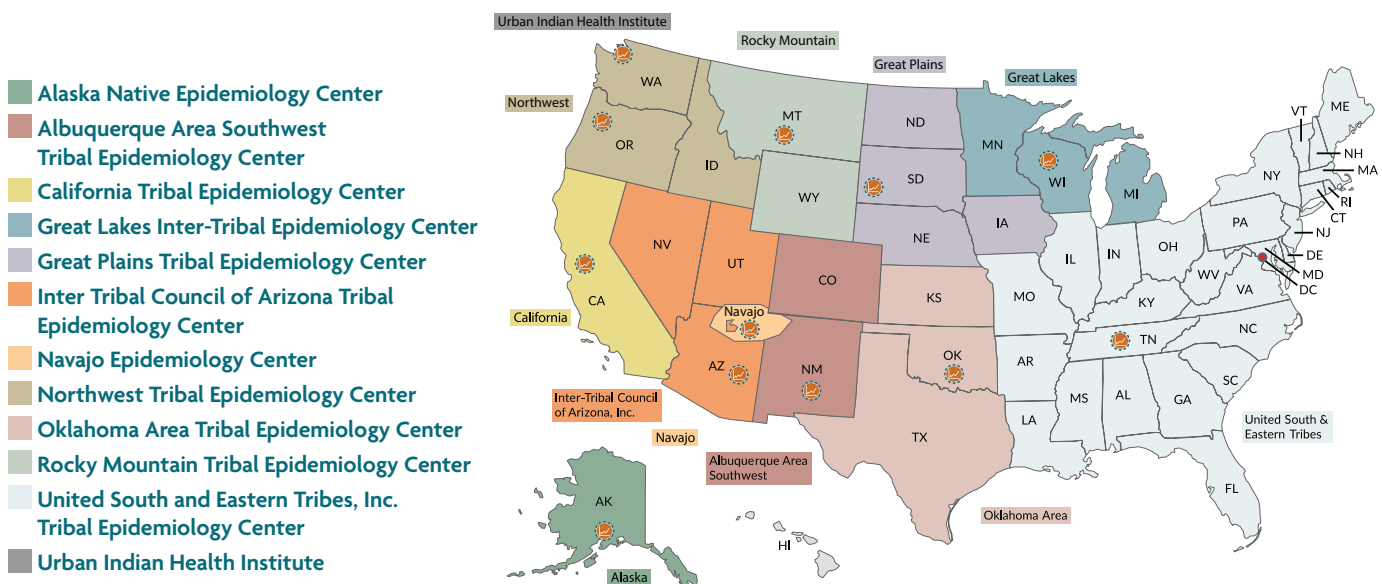
The TECPHI Program Evaluation Plan includes 27 performance measures that align with the 10 EPHS and Public Health Accreditation Board Standards and Measures. The EPHS provides a framework for describing all the activities needed to protect and promote the health of all people in communities.

TECPHI supports work in the following key strategies to deliver the 10 EPHS and contribute to the overall health of AI/AN people nationwide:

- Strengthen **public health capacity** and infrastructure;
- Implement activities to improve the effectiveness of **health promotion** and disease prevention;
- Collaborate with Tribal and other partners to achieve **collective action**; and
- Engage in **sustainability** activities.

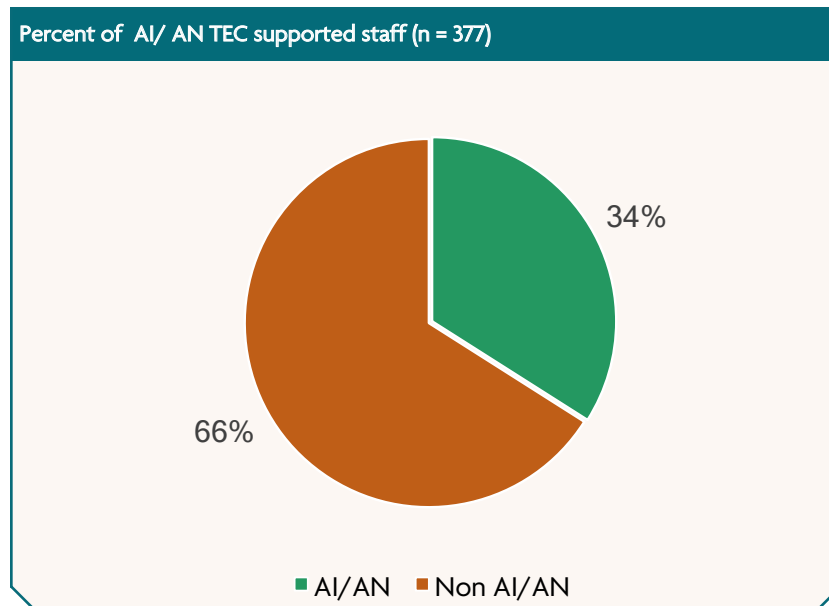
This executive summary is organized by strategy and shares the collective progress of the TECs and the NCC over the first year of TECPHI. Please see the full report for detailed evaluation findings.

Tribal Epidemiology Center Service Areas



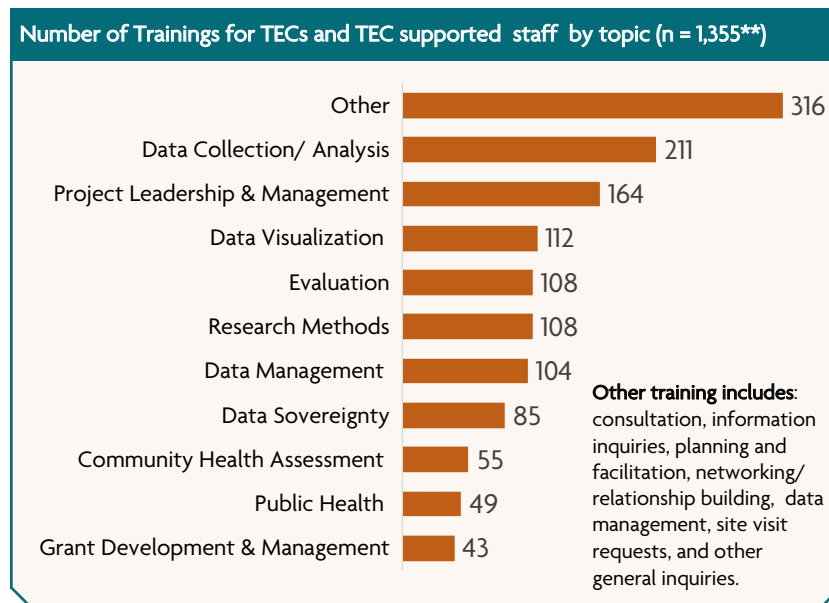
Strengthen Public Health Capacity and Infrastructure

TECPHI supports over 350 TEC staff, offering critical support to the Tribal public health system.



*Figure uses a subset of PM actual data, data presented is not mutually exclusive.

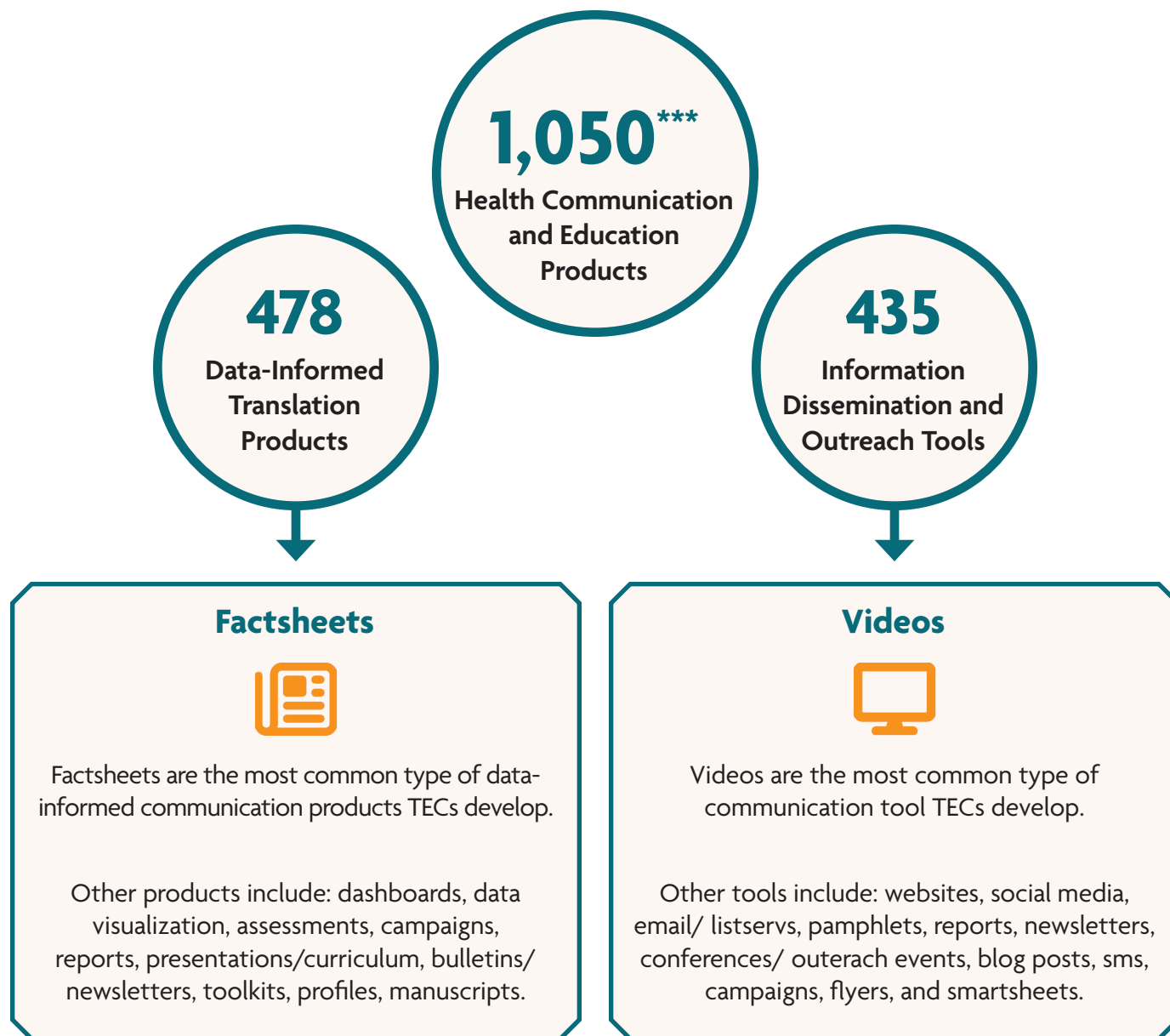
TECs attended 1300+ types of trainings in the first year, vital for building a public health workforce.



**Figure uses a subset of PM actual data.

Implement Activities To Improve The Effectiveness of Health Promotion

Effective communication by TECs helps T/TO/UIOs, Tribal leaders, and communities make informed health decisions specific to their communities or area. TECs produced over 1,000 communication materials that are actionable and culturally relevant. TECs created 435 outreach tools to share public health information.

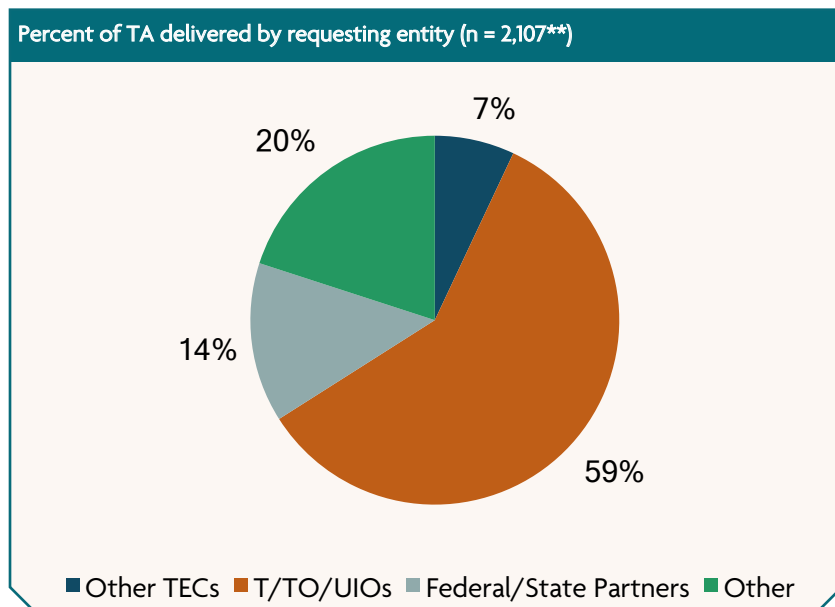
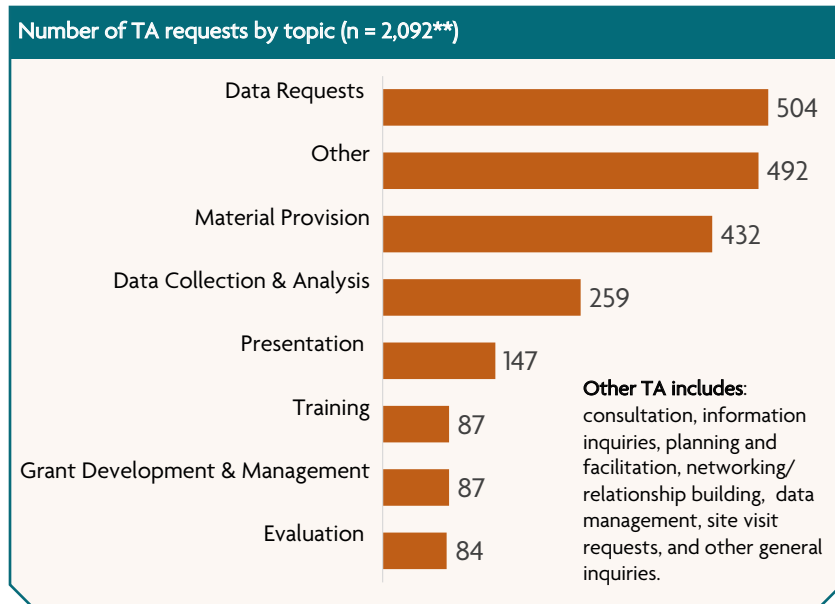


Creating culturally responsive communication products through a variety of methods is vitally important to improve communication with Ts/TOs/UIOs to reach diverse audiences. The tailored communication products were developed and disseminated to meet the unique needs of area Tribes. Websites, newsletters, and social media posts were key materials used to progress work in and provide resources surrounding the 10 Essential Public Health Services.

***Communication products, data-informed products, and communication tools are distinct performance measures with no direct relationship between them.

Implement Activities To Improve The Effectiveness of Health Promotion

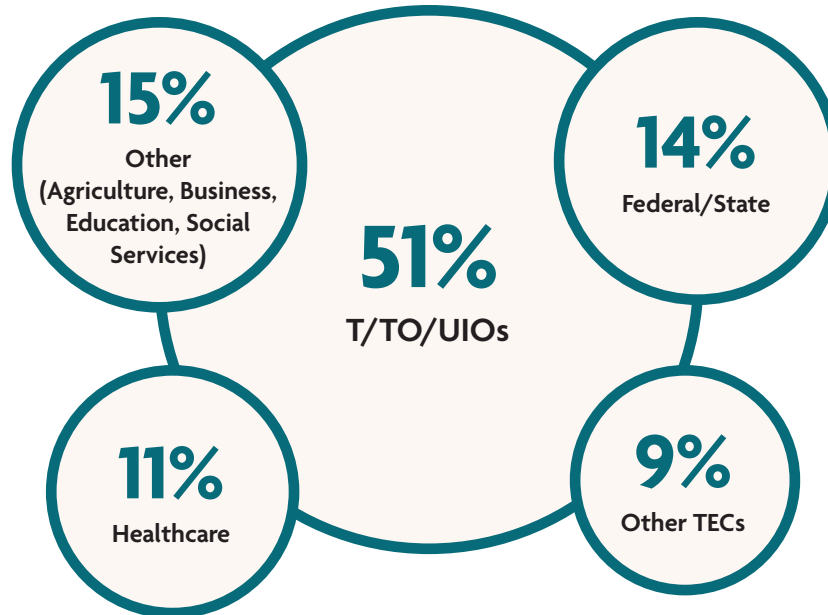
TECs fulfilled 2,209 technical assistance requests, with over 50% of support directed to T/TO/UIOs, strengthening community-driven capacity and impact.



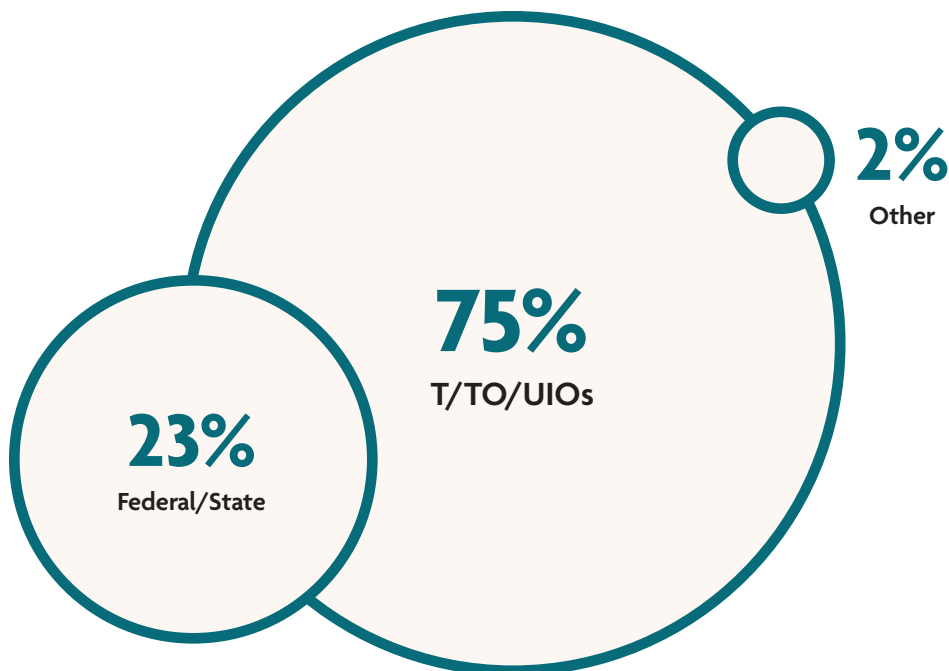
**Figure uses a subset of PM actual data.

Collaborate with Tribal and Other Partners to Achieve **Collective Action**

TEC partnerships are essential in addressing complex T/TO/UIO public health issues.
TECs reported 921 partnerships, primarily with T/TO/UIOs.



Eleven TECs established or maintained 291 DSAs with T/TO/UIOs, Federal/State, and other entities.
DSAs are essential in sharing data and understanding the health of any population.



Engage in **Sustainability** Activities

TECs have prioritized creating comprehensive strategic, sustainability, and workforce plans to enhance their long-term impact and strengthen their capacity to serve communities effectively

8 of 11
TECs have a strategic plan

6 of 11
TECs have a sustainability plan

107
Workforce planning activities